

2015 Continuing Certification Requirements (CCR) Program Updates

Extract from PMI website: <http://www.pmi.org/certification/ccr-updates-pra.aspx>

Effective 1 December 2015 the CCR program will be aligned with the employer-identified skills depicted in the PMI Talent Triangle to ensure you are equipped to remain relevant in a continually changing business environment.



The ideal skill set — the PMI Talent Triangle — is a combination of technical, leadership, and strategic and business management expertise.

What's New in the CCR Program

The overall framework of the CCR program remains the same. You will continue to earn PDUs in the categories of **Education** and **Giving Back**.

How PDUs in those categories are classified will be different.

Education

- 60% of PDUs are now required in this category to place more emphasis on developing employer-demanded skills.
- Education PDUs are aligned with the PMI Talent Triangle.
- A *minimum* number of PDUs must be earned in Technical Project Management, Leadership, and Strategic and Business Management categories.

Giving Back

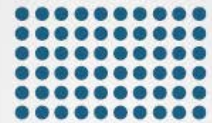
- The maximum number of total PDUs to be earned in this category has decreased.
- Activities remain the same: Volunteering, Creating Knowledge and Working as a Professional.
- The total number of PDUs to be earned in Working as a Professional has decreased.

See info graphic below.

The New Continuing Certification Requirements (CCR) Program

The total number of PDUs required to keep each certification has **not** changed. But, **how** PDUs are maintained is different because the environment has changed.

PMP | PgMP | PfMP | PMI-PBA

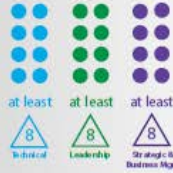


60 PDUs / 3-year cycle



Education

Now there's a **minimum** number of PDUs required in: **Technical, Leadership & Strategic Business Management** skills.



Remaining PDUs



Once you fill each section the remaining PDUs can go into any of the 3 sections.

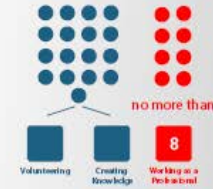
A minimum of 35 PDUs

Minimum 35 PDU / 3-year cycle. A minimum of 8 PDU for each skill.



Giving Back

The **maximum** number of PDUs has changed for: **Volunteering, Creating Knowledge and Working as a Professional.**



A maximum of 25 PDUs

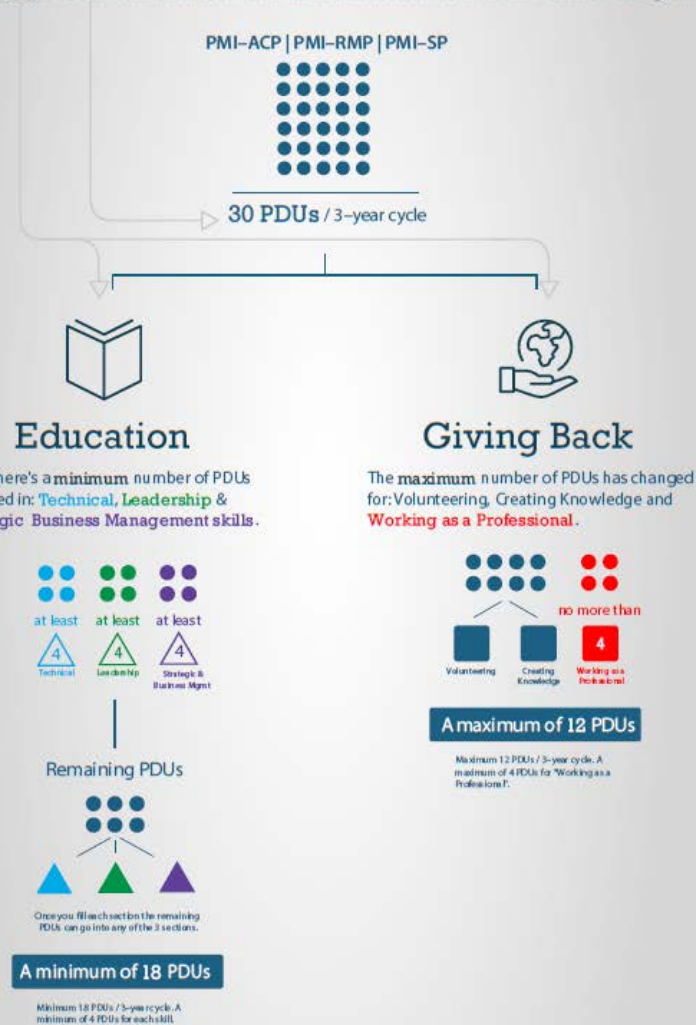
Maximum 25 PDUs / 3-year cycle. A maximum of 8 PDUs for Working as a Professional.

PMP | PgMP | PfMP | PMI-PBA

The New Continuing Certification Requirements (CCR) Program

The total number of PDU's required to keep each certification has **not** changed. But, **how** PDU's are maintained is different because the environment has changed.

PMI-ACP | PMI-RMP | PMI-SP



PDUUs Defined

Technical Project Management:

Knowledge, skills and behaviors related to specific domains of Project, Program and Portfolio Management.

Leadership:

Knowledge, skills and behaviors specific to leadership-oriented, cross-cutting skills that help an organization achieve its business goals.

Business and Strategic:

Knowledge of and expertise in the industry or organization that enhances performance and better delivers business outcomes.

CCR Migration Process

PDU Requirements

The total number of PDUs required to maintain an active certification status have not changed:

- PMP, PgMP, PfMP and PMI-PBA require 60 PDUs to renew.
- PMI-ACP, PMI-RMP and PMI-SP require 30 PDUs to renew.

Only **how** PDUs are classified will be different.

Renewal Requirements

There are different renewal requirements for the Education and Giving Back categories based on the expiration date of the certification cycle. Please refer to the table below.

Beginning 1 December 2015	Certification Expiration Date:	
	1 December 2015 – 30 November 2017	1 December 2017 and Beyond
Classify PDUs according to new CCR format.	Yes	Yes
Meet minimum number of PDUs in Education category and each of the three skill areas. This is required for renewal.	No*	Yes
Limit Giving Back category PDUs to new maximum requirement.	No*	Yes

* Compliance with the new format is encouraged, but not mandatory to renew during the current cycle. In future cycles, the new CCR program requirements must be satisfied to maintain active certification status.

CCR Program Updates Certificate Holder FAQs

1 Why are these updates being made to the CCR program?

Extensive market research and feedback from certification holders and organizations identified a subset of skills which, employers require for project practitioners to deliver improved results. These skills areas are represented in the PMI Talent Triangle. The CCR updates align professional development activities, specifically Education activities, with the PMI Talent Triangle to ensure certification holders are focused on the needs of the profession.

CCR Program Updates Certificate Holder FAQs

2 What are the updates to the CCR program?

The updates are as follows:

- Educational PDUs transition from solely self-determined professional development to learning in three skill areas (Technical Project Management, Leadership, Strategic and Business Management) identified by employers as critical skills
- The number of minimum PDUs in Education activities has increased and align with the three skill areas reflected in the PMI Talent Triangle
- The number of maximum PDUs for activities that give back to the profession has decreased
- Improve the current online CCR system so that it is easier to navigate when claiming PDUs and tracking progress

New PDU Requirements within 3-year cycle:

Certifications	Total	Minimum Education PDUs	Minimum Giving Back PDUs
PMP	60	35	25
PgMP			
PfMP			
PMI-PBA			
PMI-ACP	30	18	12
PMI-RMP			
PMI-SP			

CCR Program Updates Certificate Holder FAQs

3 When will CCR program updates go into effect?

Updates to the CCR program and the online CCR system will go into effect on 1 December 2015. More communications will also be available as PMI transitions into the new CCR program.

4 For which activities will I be able to earn and claim PDUs?

You will be able to earn and claim PDUs for all of the activities you could in the past including:

- taking course from PMI R.E.P.s, universities, or your organization
- attending educational activities and events offered by PMI Chapters or other organizations
- reading, attending a webinar, or participating in self-directed learning activities
- creating new project management knowledge
- volunteering
- working as a project practitioner

CCR Program Updates Certificate Holder FAQs

5 How will the CCR program updates impact me?

The minimum number of PDUs for Education activities increases and the maximum number of PDUs for activities that Give Back to the Profession decreases. It also provides direction for Education activities aligned with the three areas of focus for the PMI Talent Triangle.

Education PDUs are as follows:

Skill Areas	PMP, PgMP, PfMP, PMI-PBA certification holders	PMI-ACP, PMI-RMP, PMI-SP certification holders
Technical Project Management	8	4
Leadership	8	4
Business and Strategic Management	8	4
Any of the three skill areas	11	6
Total Minimum Education PDUs	35	18

The number of maximum PDUs you earn participating in activities that give back to the profession (i.e., creating project management knowledge, volunteering, and working as a practitioner) has been updated. Those PDU requirements are as follows:

CCR Program Updates Certificate Holder FAQs

Activities that Give Back to the Profession	PMP, PgMP, PfMP, PMI-PBA maximum PDU requirement	PMI-ACP, PMI-RMP PMI-SP maximum PDU requirement
Creating New Project Management Knowledge	Cannot exceed a total of 25 for entire category	Cannot exceed a total of 25 for entire category
Volunteering	Cannot exceed a total of 25 for entire category	Cannot exceed a total of 25 for entire category
Working as a Project Professional	8 maximum	4 maximum
Total Maximum PDUs	25	12

6 I see that the number of PDUs I'm able to earn for working as a project practitioner has changed. What are the rules for claiming these PDUs?

You can claim PDUs for working as a project practitioner once the work period has completed. That means that you cannot claim PDUs for work that will be completed at a future date.

CCR Program Updates Certificate Holder FAQs

7 How are the three areas of focus for the PMI Talent Triangle defined?

The PMI Talent Triangle outlines the three skill areas employers need. They are as follows:

Technical Project Management: Knowledge, skills and behaviors related to specific domains of Project, Program and Portfolio Management.

Leadership: Knowledge, skills and behaviors specific to leadership-oriented skills that help an organization achieve its business goals.

Strategic and Business Management: Knowledge of and expertise in the industry or organization that enhances performance and better delivers business outcomes.

8 What are examples of courses that align to an individual the skill areas within the PMI Talent Triangle?

Technical Project Management: Examples are: Advanced project management, Techniques to improve your WBS, How to gather and document requirements, Risk management for your portfolio.

Leadership: Examples are: negotiation, communication, motivation, problem solving, and conflict resolution, etc.

Strategic and Business Management: Examples are: product knowledge, industry knowledge, business acumen, innovation strategy alignment, market strategy alignment, differentiation strategy alignment, customer strategy alignment, finance, marketing, etc.

CCR Program Updates Certificate Holder FAQs

9 Are the skill areas of the PMI Talent Triangle aligned with activities that Give Back to the Profession?

No. They are not. You can still earn PDUs for activities that give back to the profession including creating new project management knowledge, volunteering, and working as a professional in project management. Volunteer activities should reflect your use of practitioner knowledge and skills (i.e., planning the project for a charity).

10 Can I still earn Education PDUs the same way I used to?

Yes. You can earn your Education PDUs by attending classes offered by PMI R.E.P.s, Chapters or by your organizations or a university; attending a PMI congress, SeminarsWorld® and other events, or through self-directed learning.

11 Can I earn multiple PMI Talent Triangle PDUs for a single Education activity?

Yes. It is possible to earn multiple PMI Talent Triangle PDUs for one education activity if the content aligns with all three skill areas (Technical Project Management, Leadership, Strategic and Business Management). For example: if you complete a course that contains content on techniques for project time management and on negotiating with stakeholders, you could claim this Education activity in the skill areas of Technical Project Management (for the project time management portion of the class) and Leadership (for the negotiation portion of the class).

CCR Program Updates Certificate Holder FAQs

12 Can I claim PDUs for a single Education activity in more than one skill area of the PMI Talent Triangle?

Yes. You can claim PDUs for a single Education activity under multiple skill areas (Technical Project Management, Leadership, Strategic and Business Management) of the PMI Talent Triangle. For example: if you read a book that contains content on techniques for project time management and on negotiating with stakeholders, you could claim this Education activity in the skill areas of Technical Project Management and Leadership.

CCR Program Updates Certificate Holder FAQs

13 Once I have earned the minimum PDUs in each skill area of the PMI Talent Triangle, what can I earn and claim for Education PDUs to meet the total minimum requirement?

Once you meet the minimum requirement for each skill area (8 for PMP, PgMP, PfMP, and PMI-PBA; and 4 for PMI-RMP, PMI-ACP, and PMI-SP), the remaining PDUs required to meet the minimum education threshold can be earned in any area of the PMI Talent Triangle. This is an example of what your PDU earnings may look like where Education activities are concerned.

Skill Areas	PMP, PgMP, PfMP, PMI-PBA	PMI-ACP, PMI-RMP PMI-SP
Technical Project Management	12	8
Leadership	15	4
Business and Strategic Management	8	6
Total Minimum Education PDUs	35	18

CCR Program Updates Certificate Holder FAQs

14 How do I maintain multiple certifications?

The rules and procedures around maintaining multiple certifications remain the same. All Leadership and Strategic and Business Management PDUs can be claimed for and shared across your multiple certifications. Technical Project Management PDUs must apply to your specific certification. This table shows some examples of how technical project management courses could be applied across multiple certifications:

You have the:	You took a 2-hour class in project management (PDUs apply as follows)	You took 12-hour course in portfolio management; 3 hours were spent on the risk register	You took an 8-hour project management course that spent 1 hour n requirements gathering, 1 hour on risk mitigation, 30 minutes on project scheduling, and 30 minutes on agile
PMP	2	12	8
PgMP	2	12	8
PfMP	0	12	0
PMI-ACP	0	0	.50
PMI-PBA	0	0	1
PMI-RMP	0	3	1
PMI-SP	0	0	.50

Your respective [certification handbook](#) provides more examples of how these PDUs apply across the certifications.

CCR Program Updates Certificate Holder FAQs

15 What if I just earned my certification, or currently in the first year of my certification cycle?

You are encouraged to start earning PDUs as soon as you are able. You can claim your PDUs in the current online CCR system. After the CCR program and system updates as of 1 December 2015, continue to earn and claim PDUs, which will be aligned with the PMI Talent Triangle, and all PDUs align with the new minimum/maximum requirements.

16 What if I am currently in the second or third year of my certification cycle?

If you are in your second or third year of your certification cycle (if you are expiring in 2016, 2017), then the PDUs that you have earned and claimed will be retained in the system and on your transcript. Any Education PDUs you need to earn will have to align to the PMI Talent Triangle skills areas after the 1 December 2015 update.

17 Can I still transfer PDUs to my next cycle?

Yes. The rules and procedures for transferring PDUs to the next certification cycle remain the same. The total amount of transferable PDUs is the same except once the update goes into effect, the Education PDUs being transferred to the next cycle will be categorized to the appropriate skill areas of the PMI Talent Triangle (Technical Project Management, Leadership, or Strategic and Business Management). Consult your respective [certification handbook](#).

CCR Program Updates Certificate Holder FAQs

18 Are there additional aspects of the CCR program, not mentioned in the communication so far that will be updated by December?

No. Some aspects of the CCR program will be modified; many aspects will remain the same, including the cost. Everything that is being updated has been included in the communication so far. More information will be provided as this process takes shape. If something has not been specifically addressed as changing then it will continue to function as it does in the current CCR program.

19 Will the cost for renewal change with the updates?

No. The cost for renewing your certification will remain the same.

20 I am looking for activities to fulfill PDU requirements. How soon can I expect to see R.E.P. courses or PMI events aligned with the PMI Talent Triangle skills areas?

PMI Registered Education Providers (R.E.P.s) and chapters will have the opportunity to align their courses and events with the PMI Talent Triangle and make updates online as of the third quarter this year. Any updates to courses and events will apply to those being held after 1 December 2015.

CCR Program Updates Certificate Holder FAQs

21 How soon can I claim my PDUs under the new requirements?

1 December 2015